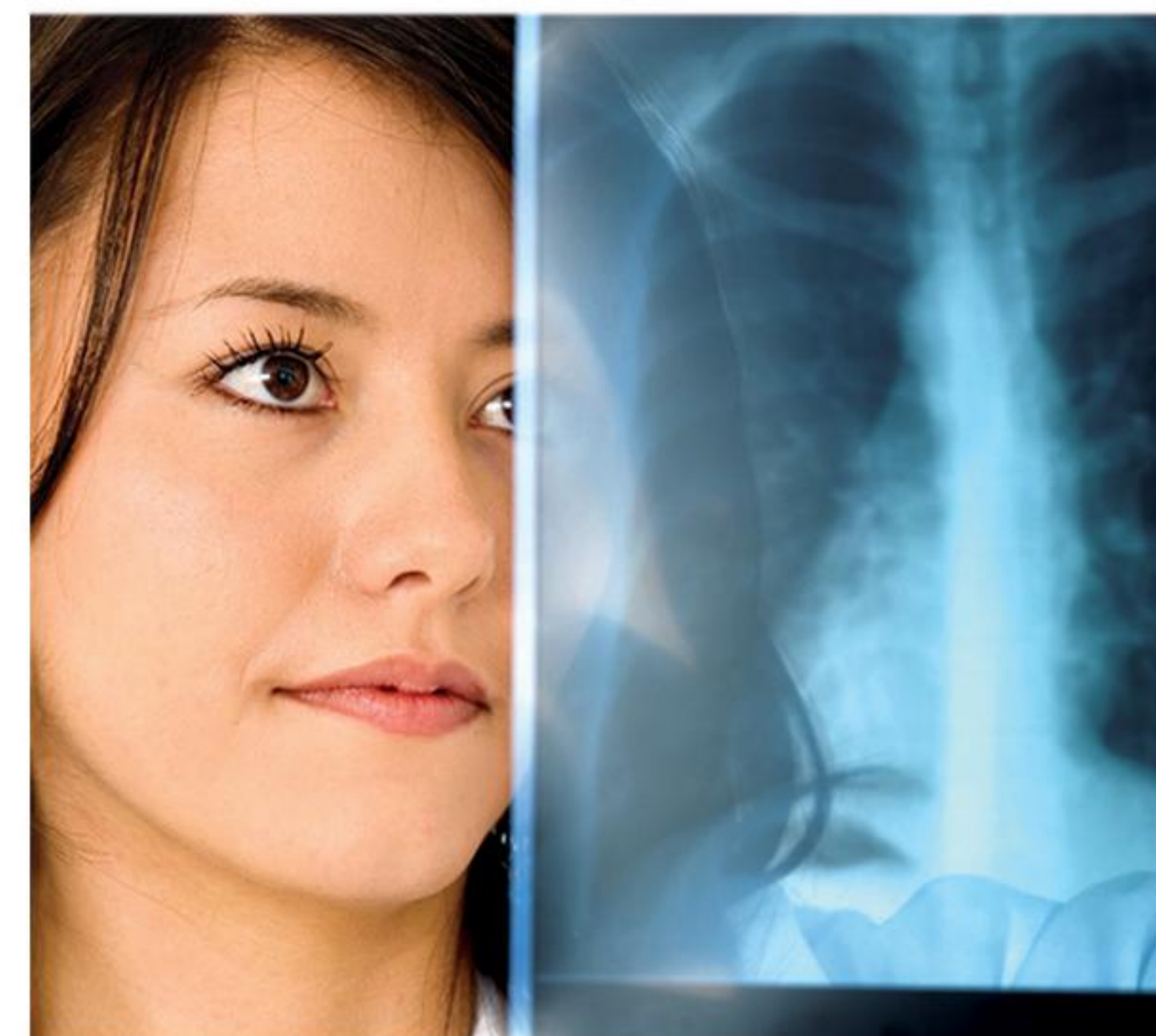


 **SHIMADZU**
Solutions for Science
since 1875



Digital Radiography System

The ultimate imaging solution for workflow & efficiency



Q-RAD / Q-RAD₅₀ DR Series

Innovative | High Throughput | Enhanced Productivity | Reliability

HIGH RELIABILITY AND PERFORMANCE

Hallmarks of Shimadzu's X-ray System

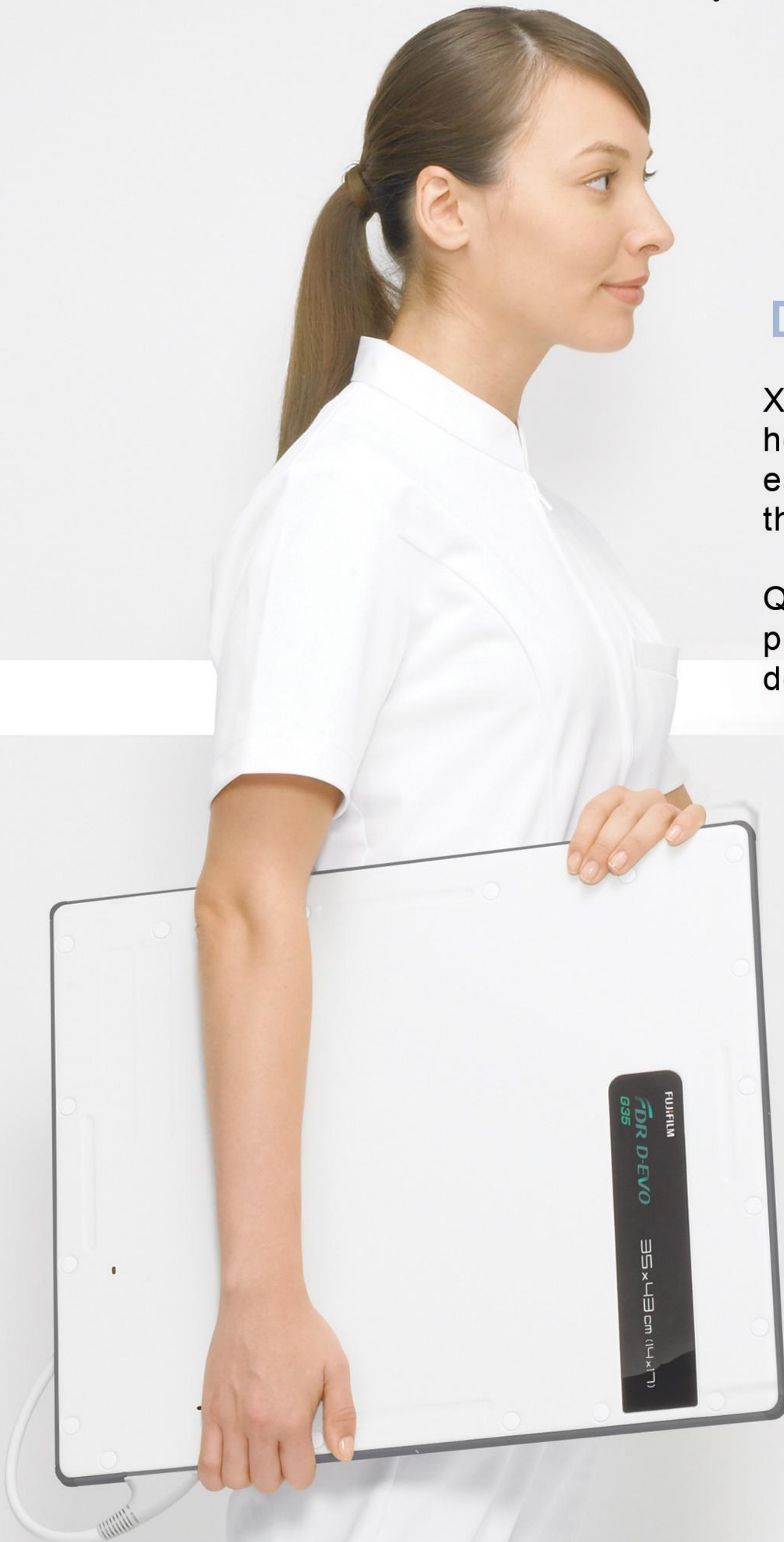
With over a century of experience in manufacturing X-Ray apparatus, Shimadzu have been recognized globally as a supplier of high quality X-Ray imaging products. We have a proven track record for quality, reliability, performance, cost effectiveness and low ownership cost

Shimadzu's general radiography systems are imbued with the Shimadzu heritage. Additionally, our general radiographic system features state-of-the-art technology that enhances productivity, user-operability, patient comfort and safety

DIGITAL RADIOGRAPHY SYSTEM

X-Ray is the most important diagnostic tool in the hospital and the technologists need a flexible, easy-to-use, reliable and efficient system enhancing the workflow

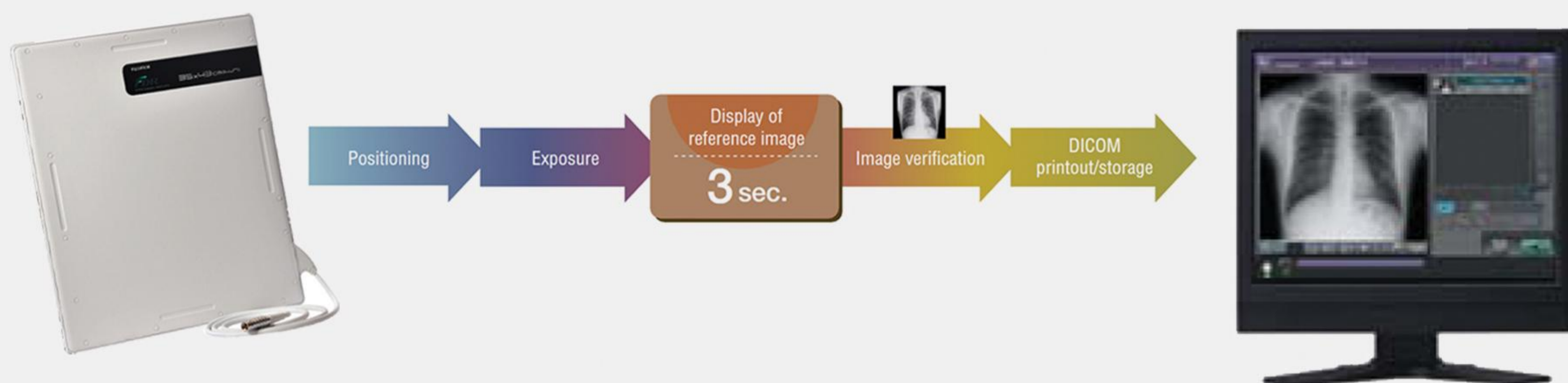
Q-Rad/Q-Rad50 DR series will increase the productivity and performance in the radiology department



STREAMLINED WORKFLOW & IMMEDIATE RESULTS

Enhances Productivity

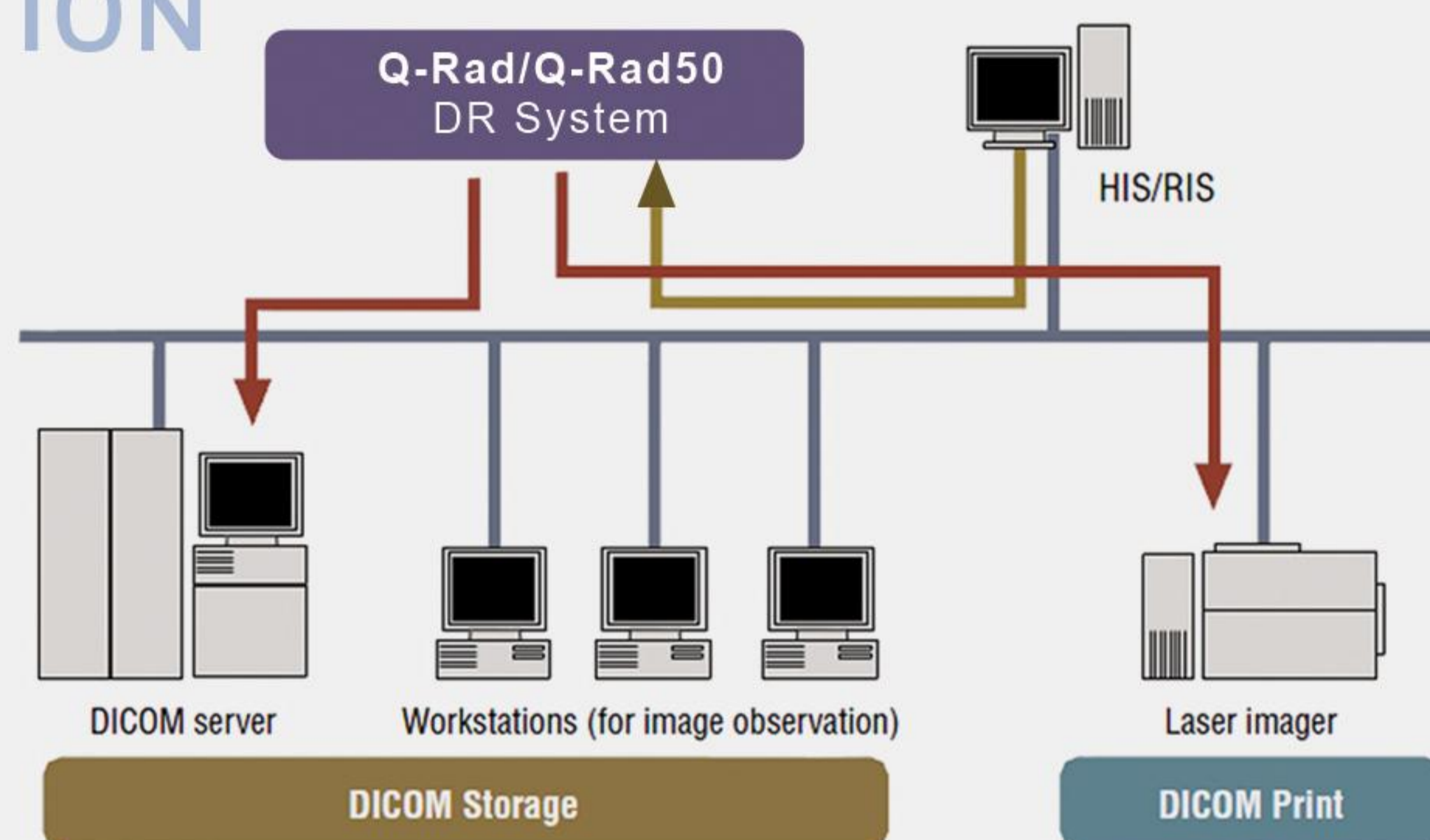
In a streamlined procedure that eliminates film development, cassette replacement, and other process steps, flat panel DR System delivers X-Ray images more quickly and efficiently than conventional systems, with significantly less wait time for patients and staff. Images can be previewed in just seconds after exposure, allowing the operator to immediately confirm body positions and other factors before sending the image to a network destination. And if other exposure is necessary, the detector's rapid refresh cycle ensures that the next image can be captured without delay.



SEAMLESS NETWORK INTEGRATION

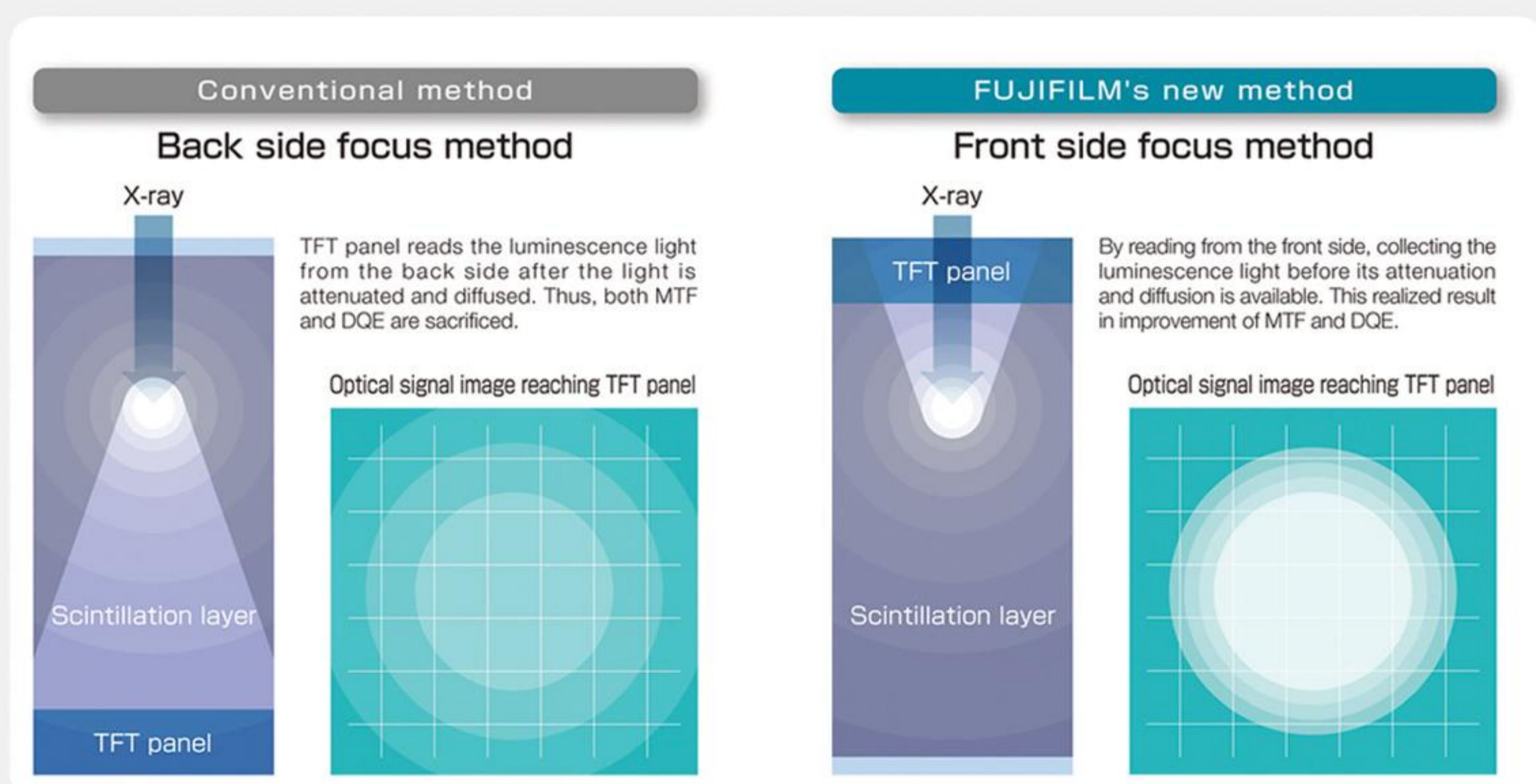
For optimized workflow

Ethernet 10/100 Base-T connectivity with DICOM 3.0 compatibility enables seamless data transfer to any DICOM hard copy output device, PACS, or HIS/RIS for efficient printing, archiving and remote viewing of images.



IRRADIATION SIDE SAMPLING (ISS) METHOD OF CONVERSION

Provides high sharpness image even with low dose



The D-EVO panel uses "ISS method" the new proprietary technology developed by Fujifilm. This results in low scattering of X-ray signals and significantly improves the image quality.

The FDR D-EVO achieves approximately 30% dose reduction compared to conventional CR System

FLEXIBLE, PORTABLE DIGITAL FLAT PANEL

Improved clinical effectiveness and workflow

Portability and lightweight of the detector makes it ideal for use in a variety of radiography applications including trauma and bedside examinations.

The large 14 X 17 inch (35 X 43 mm) detector can be used in a table or with a vertical stand.

The compact design makes it easy to capture the images from almost any angle or position and provides the flexibility to do out-of-bucky examination.

The panel allows table top work, standing feet and cross table examinations.

The unit is light enough so that patient can also hold it with ease.



Supporting various positions by table-top exposure



Knee joint axial



Wheelchair exposure



Stretcher exposure



Abdomen lateral decubitus



Knee joint lateral



Cubital joint lateral



Standing Ankle



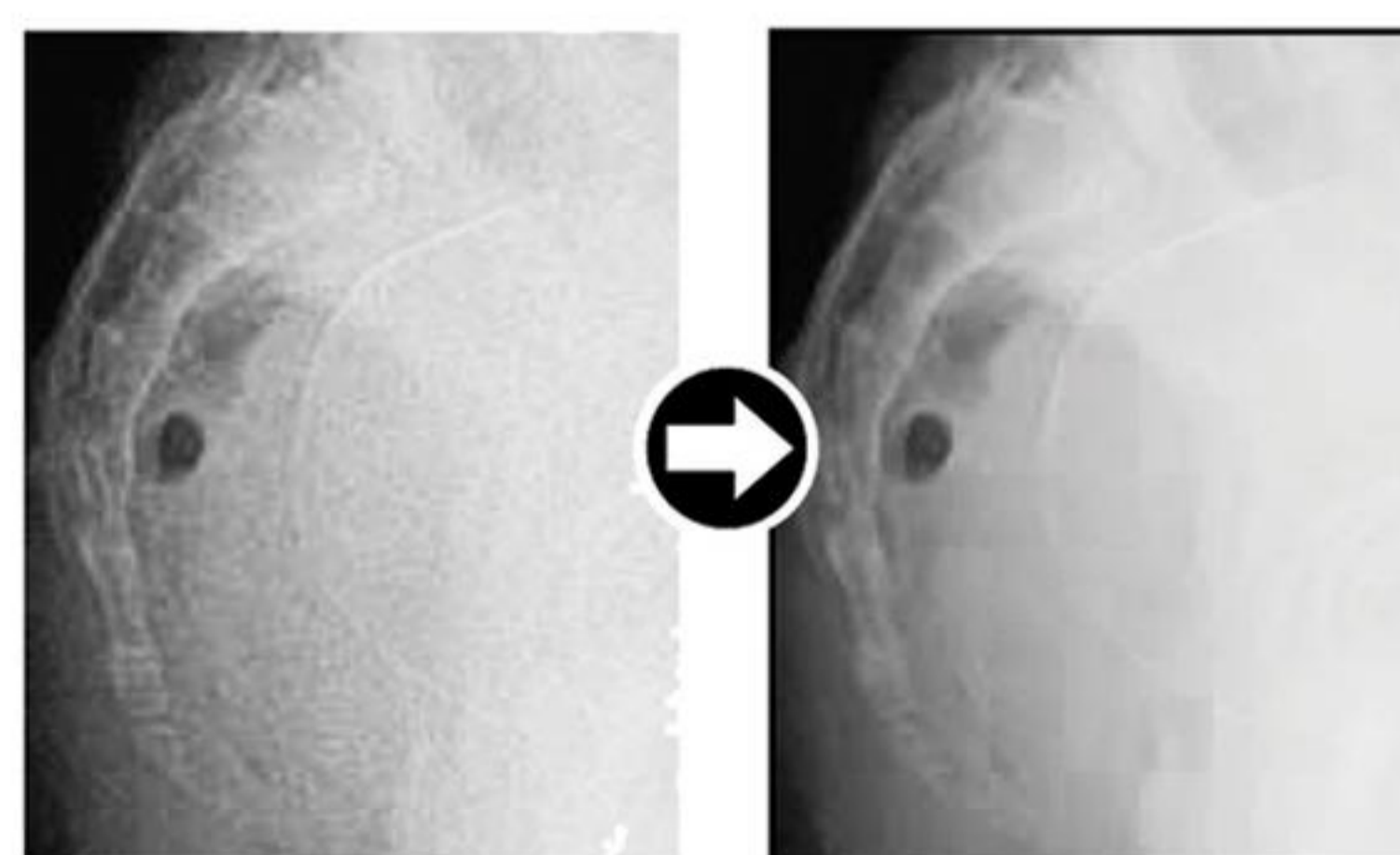
Hand

Software Technology



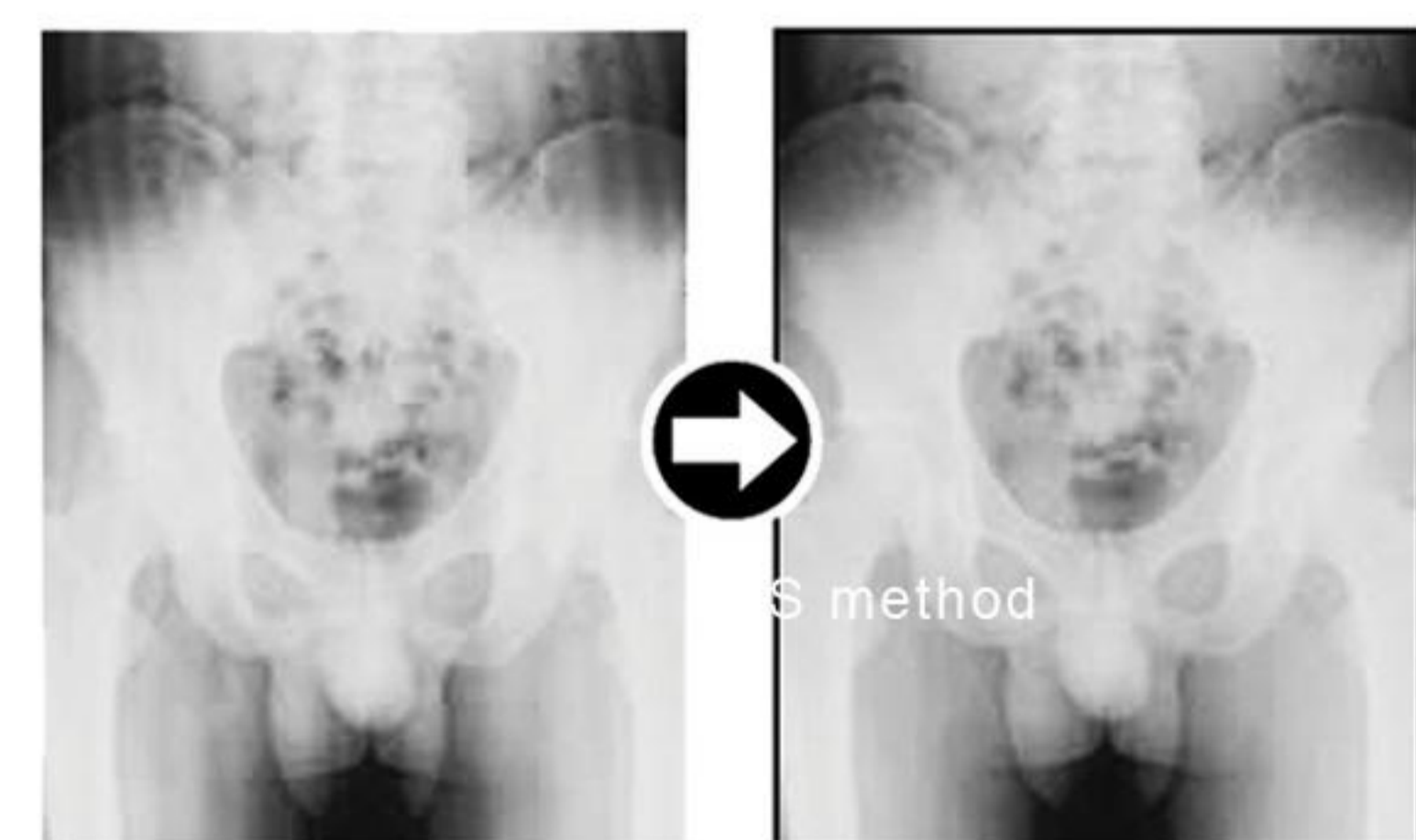
MFP* Multi-Frequency Processing

Enhanced images. All diagnostic scopes will be enhanced except for noise.



FNC Flexible Noise Control

Provides a non-grainy image by mainly isolating and suppressing the noise from the signal.



GPR* Grid Pattern Removal

Removes the stationary grid patterns thus preventing Moire from being generated resulting in easier diagnosis.

*optional software

CHOICE OF GENERATOR AND TUBE TO MEET YOUR NEEDS



UD125 P-C / P-CH

- * High Frequency Inverter
- * Wall mounted Console
- * User friendly
- * Easy-to-set anatomical programs



UD150L-40E

- * High-frequency inverter technology
- * Exposure timing indicated by light and sound(option)
- * A large character readout LED and hybrid keys allow easy one touch setting of APR exposure parameters
- * Error messages and setting menus

SPECIFICATION

X-ray generator	16 KW DR (Q-Rad)	50 KW DR (Q-Rad50)
Model	UD125P-C / P-CH	UD150L-40E
Control method	High frequency inverter	High frequency inverter
kV range	40-125kV	40-150kV
mA range	63-200mA	10-630mA
mAs range	0.5-320mAs(200mAs)	0.5-800mAs
Exposure time	2.5ms-5.0s	1ms-10s
Anatomical program Preset	432Max	224Max
Display	LED display	LED display
X-ray Tube Unit		
X-ray tube	Rotating anode	Rotating anode
X-ray tube focal spot	1.0mm/2mm	0.6mm/1.5mm(0.6mm/1.2mm*)
Anoda Heat Storage	140kHU	200kHU
Power Requirement	3 Phase, 20KVA 400 V, 50Hz	3 Phase, 65KVA 380-400V, 50Hz
Detector Unit		
Detector Type	Flat panel detector with Amorphous Silicon (a-Si)	
Detector Size	14 inX 17 in (35cmsX43cms)	
Pixel Size	150 Microns	
Matrix	2304X2880 Pixels	
A/D Conversion	16 bits	
Image Preview Time	3-5sec	
Weight	2.8Kgs	

DR CONFIGURATION CHART

COMBINATION	UD125P-C	UD150L-40E	FC-Q	CH200M	BK12Si	BR12Si	FUJI D-EVO
1	●		●		●	●	●
2		●	●		●	●	●
3		●		●	●	●	●

Vertical Bucky Stand

BR-12Si

BR-12Si includes a bucky unit with a cassette tray and a grid. A convenient lower cut out makes this unit both compact and easy for the patients

Movement	Manual, Counter balanced
Bucky Unit	Grid: R-12:1,N-40 lines/cm F-170 cms
Vertical Travel Range	640mm ~ 1950mm
Locking method	Electromagnetic. (Lock released when switch is pressed)



Collimator

R-20 MultiLeaf Collimator

Light switch with automatic off function
Max. 430mm x 430mm



Bucky Table

BK-12Si

Fixed table with four way floating top with extremely smooth movement making patient positioning easier. Table includes a bucky unit with a cassette

Size of Table Top mm(in)	810 x 2000 (31.9 x 78.7)
Table top height mm(in)	700 (27.6)
Table top movement	4 Way
Table top material	Medium density fibre
Table top floating range mm(in)	Long 1100 (43.3), Trans +/- 125 (+/-4.9)
Grid Unit	R-10:1,N-40 lines/cm F-100 cms
Max. allowable patient load	200 kgs
Locking method	Electromagnetic. (Lock released when switch is pressed)



X-Ray tube support (Choice of X-ray tube support)

Ceiling mounted

Fully counter balanced ceiling type tube support

Longitudinal travel mm(in)	2950 (116){along 4m fixed rail}
Lateral Travel mm(in)	1400(55){along 2m moving rail}
Vertical Travel mm(in)	1600 (63)
Tube angulation around horizontal axis	+120° to -180° continuous
Vertical rotation	+/- 180°
Locking method	Electromagnetic. (Lock released when switch is pressed)



Column Type

Fully counterbalanced floor mounted column type tube support

Longitudinal travel mm(in)	2500 (98.43)
Lateral Travel mm(in)	250 (9.84)
Vertical Travel mm(in)	1500 (59)
Tube angulation around horizontal axis	+/- 180° continuous
Column rotation for lateral table radiography	+/- 90°
Locking method	Electromagnetic. (Lock released when switch is pressed)

Remarks

- *X-ray room layout to be approved by AERB before installation
- *AERB stipulates registration for every X-ray units installed
- *Every specification in this brochure is a standard value, and it may vary a little from the actual.
- *The appearances and specifications are subject to change for reasons of improvement without notice.
- *Before operating this system, you should first thoroughly read the instruction manual



Shimadzu Medical (India) Pvt Ltd.
www.shimadzuindia.com
E-mail: admin@shimadzuindia.com



Registered Office & Factory:

1063, 1st Floor, Munusamy Salai, K.K.Nagar, Chennai-600078
Ph: (044) 24715535, Fax: (044) 24715530

Delhi: 408-409, Rattan Jyoti, 18, Rajendra Place, New Delhi-110 008
Ph: (011) 25862421/25863931, Fax: (011) 2586 2968

Kolkata: 4th floor, Devi Market, 83, SP Mukherjee Road, Kolkata-700026.
Telefax: (033) 24639088

Mumbai: 1 A/B, Rushabh Chambers, Makwana Road, Marol Andheri (East), Mumbai – 400 059
Phone: [022] 2920 1692 / 2920 4741 / 2920 4809
Fax: [022] 2920 1678

Shimadzu Medical (India) Pvt Ltd., has been certified by TUV Rheinland as a manufacturer of medical equipments in compliance with ISO 9001:2000 Quality Management Systems.

Channel Partners :

